



Specifications

Equipment Level and Technical Data

DUAL FUEL

CAMPRO
1.6 LITRE
ENGINE
DOHC 16v

LOTUS
RIDE
&
HANDLING

ACTIVE
SAFETY
FEATURES

ecologic

GEN-2 ecoLogic Equipment Level

Derivative
Transmission

Saloon

Hatchback

1.6 Persona
MT

1.6 GLS
MT

1.6 GSX
MT

Audio

Blaupunkt radio/CD player with RDS	•	•	•
Bluetooth-ready audio unit	•	•	•
MP3-capable CD player	•	•	•
Steering wheel mounted audio controls	•	•	•
4 speaker system	•	•	•
Removable roof-mounted aerial	•	•	•

Comfort and Convenience

Driver seat – height, tilt and slide adjustable	•	•	•
Passenger seat – tilt and slide adjustable	•	•	•
Driver foot rest	•	•	•
Rear seats with 2 adjustable headrests	•	•	•
60:40 split folding rear seats	•	•	•
Cup holders (2 front and 2 rear)	•	•	•
Anti-slip carpet mats	•	•	•
3 assist grips	•	•	•
2 coat hooks	•	•	•

Heating and Ventilation

Heater with 4 adjustable dashboard vents	•	•	•
Heated rear window	•	•	•
Air conditioning with pollen filter	•	•	•
Electric front windows	•	•	•
Electric rear windows	•	•	•

Instruments

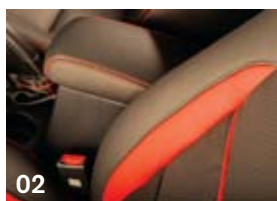
Seatbelt warning light	•	•	•
Seatbelt warning buzzer	•	•	•
Door ajar warning light	•	•	•
Lights on warning buzzer	•	•	•
Handbrake warning light	•	•	•
Rheostat dimmer	•	•	•
Tachometer	•	•	•
Fuel and trip computer (some functions operate when running on petrol only)	•	•	•
Illuminated clock	•	•	•
Power point socket	•	•	•
Centre console switch and LPG fuel indicator	•	•	•

Luggage and Storage

Floor console box with lid	•	•	•
Front door pockets	•	•	•
Front seats with rear map pockets	•	•	•
Dashboard storage tray	•	•	•



01



02



03



04

- 01 Blaupunkt CD/radio
- 02 Optional leather interior
- 03 Driver's seat
- 04 5-speed gearbox

GEN-2 ecoLogic Equipment Level

Derivative
Transmission

Saloon

Hatchback

1.6 Persona
MT

1.6 GLS
MT

1.6 GSX
MT

Luggage and Storage continued

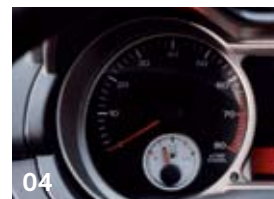
Rear parcel shelf	•	•	•
2 utility trays in boot	•	•	•
Internal boot strap		•	•
Centre console storage	•	•	•
Toolkit storage holder	•	•	•
Toolkit	•	•	•
Glove box	•	•	•

Safety

Airbag – driver	•	•	•
Airbag – passenger	•	•	•
Airbag – twin side			•
Anti-lock brakes (ABS) with EBD	•	•	•
3-point front seatbelts with pre-tensioners	•	•	•
Three 3-point rear seatbelts	•	•	•
Built-in front headrests		•	•
2 height-adjustable front headrests	•		
2 height-adjustable rear headrests	•	•	•
Reverse distance sensors	•	•	•
ISOFIX-style child-restraint system	•	•	•
Child locks	•	•	•
Side impact protection bars	•	•	•
Crumple zones (front and rear)	•	•	•
Anti-roll bar (front and rear)	•	•	•
Front disc brakes – ventilated	•	•	•
Rear disc brakes – solid	•	•	•
Front fog lamps	•		•
Rear fog lamps	•	•	•
Dual warning horn	•	•	•
Emergency tyre repair kit	•	•	•

Security

Multi-function alarm	•	•	•
Engine immobiliser	•	•	•
Remote central locking	•	•	•
Remote automatic boot unlock	•	•	•
Internal boot release	•	•	•
Automatic central locking	•	•	•
Internal fuel release	•	•	•
Visible VIN security plate	•	•	•



- 01 Rear lights
- 02 CamPro 16v engine
- 03 15" alloy wheels (hatchback)
- 04 110bhp

GEN-2 ecoLogic Equipment Level

Derivative
Transmission

Saloon

Hatchback

1.6 Persona
MT

1.6 GLS
MT

1.6 GSX
MT

Steering

Power-assisted steering	•	•	•
Steering column – adjustable	•	•	•

Style

15" alloy wheels	•	•	•
Locking wheel nuts	•	•	•
Tailgate spoiler			•
Rear spoiler	•		
Bumpers – body coloured	•	•	•
Door mirrors – body coloured	•	black	•
Door handles – body coloured	•	black	•
Centre pillar – body coloured	•		
Side moulding – body coloured	•	black	•
Titanium finish gear shift	•	•	•
Stainless steel exhaust trim	•	•	•
Front and rear lower styled skirt			•
Styled side sill skirts			•
Black reflective headlamps		•	•
Separate LPG filler cap – body coloured	•	•	•

Visibility and Lighting

Door mirrors – electrically adjustable	•		•
Door mirrors – manually adjustable		•	
Door mirrors – manual folding	•	•	•
Front wipers – 2-speed continuous and intermittent	•	•	•
Rear wiper – continuous		•	•
Rear wash wiper		•	•
Halogen headlamps with semi-automatic levelling	•	•	•
High-mounted brake lamp	•	•	•
Tinted glass	•	•	•
Tinted and laminated windscreen	•	•	•
Interior light	•	•	•
Luggage area light	•	•	•
Sunvisor with vanity mirror – passenger	•	•	•
Sunvisor with vanity mirror – driver			•
Sunvisor with ticket holder – driver	•	•	
Rear-view mirror with day/night settings	•	•	•



- 01 Proton badge
- 02 LPG cap
- 03 Dual-fuel switch
- 04 Steering wheel controls

GEN-2 ecoLogic Technical Specifications

Derivative
Transmission

Saloon

Hatchback

1.6 Persona
MT

1.6 GLS
MT

1.6 GSX
MT

Powertrain

Engine	CamPro 4-cylinder in-line 16V Multi-Point Injection		
Transmission	5 MT	5 MT	5 MT
Bore x stroke (mm)	76 x 88		
Total displacement (cc)	1597		
Maximum power (6000 rpm)	110 (82)		
Maximum torque (4000 rpm)	148 (109.2)		
Fuel system	Multi-point fuel injection		
Power steering system	Hydraulic power steering		
Front suspension	MacPherson strut with stabiliser bar		
Rear suspension	Multi-link with stabiliser bar		
Tyre size	195/60R 15" Tyre	195 x 55 R15	
Wheel size	15" x 6.0J Alloy rim	Alloy 15" x 6.5J	
Spare wheel	Steel 4T x 16		
Spare tyre	T135-70 D16		
Front brakes	15" ventilated front disc		
Rear brakes	15" solid rear disc		
Gear ratios	MT	MT	
1st	3.583	3.583	
2nd	1.947	1.947	
3rd	1.343	1.343	
4th	0.967	0.976	
5th	0.804	0.804	
Final drive ratio	4.333	4.052	

Power and Performance (Based on petrol model)

Maximum speed (mph)	118	118
Acceleration (0-62 mph) (secs)	12	12.6

Fuel consumption (mpg/(l/100 km))* (Based on petrol model)

Urban	27.7 (10.2)	27.9 (10.1)
Extra urban	62.8 (4.5)	50.5 (5.6)
Combined	42.8 (6.6)	39.2 (7.2)
CO ₂ emissions (g/km)	157	172
Tax band*	D	E

Dimensions (mm)

Overall length	4477	4310
Overall width	1725	1725
Overall height	1437	1435
Wheelbase	2600	2600
Front overhang	867	870
Rear overhang	1010	840
Front track	1475	1475
Rear track	1470	1470
Ground clearance (unladen)	155	150

Weights (kg)

Kerb weight [§]	1325	1280
Total vehicle weight (fully laden) without towing	1700	1655
Total vehicle weight (fully laden) with towing	1715	1670
Total vehicle weight (fully laden) with load on coupling device	1765	1720
Towing capacity (trailer weight with brake) (kg)	930	860
Towing capacity (trailer weight unbraked) (kg)	500	500

Other information

Petrol tank capacity (litres)	50
Insurance group	7a
Minimum turning radius m (feet)	5.4 (17.7)
LPG tank capacity (litres)*	66
Seating capacity	5

*As LPG expands, max. fill-level is around 80% of total tank size capacity.

†Proton GEN-2 ecologic models qualify for an alternative fuel discount on road tax.

‡Dependent on driving style, road and traffic conditions, environmental influences, the state of the vehicle and equipment, in practice fuel consumption figures can arise which may deviate from the figures shown.

§This is the weight of the vehicle with no fuel and no occupants. The weight may be increased when special equipment is added to the vehicle whereby the load and maximum speed are reduced accordingly.

GEN-2 ecoLogic Optional Extras

Derivative
Transmission

Saloon

Hatchback

1.6 Persona
MT

1.6 GLS
MT

1.6 GSX
MT

Metallic paint	£325.00**		
10-CD changer	£249.00**		
Leather interior	£1,000.00**		£1,000.00**
Colour Options			
Chilli Red (solid)	•	•	•
Iridescent Silver (metallic)	•	•	•
Light Metallic Gold (metallic)	•		
Blueberry Tea (metallic)	•		
Onyx Black (metallic)	•		
Steel Grey (metallic)		•	•
Passion Blue (metallic)		•	•
Nanbu Black (metallic)		•	•
Energy Orange (metallic)		•	•

Saloon



Chilli Red (solid)



Light Metallic Gold (metallic)



Blueberry Tea (metallic)



Onyx Black (metallic)



Iridescent Silver (metallic)

Hatchback



Chilli Red (solid)



Steel Grey (metallic)



Passion Blue (metallic)



Nanbu Black (metallic)



Iridescent Silver (metallic)



Energy Orange (metallic)

**Total price including VAT

The specifications and images contained in this brochure are for information purposes only and relate to the time at which this brochure was printed. The specifications in this brochure relate to Euro Step IV vehicles. Every effort has been made to ensure accuracy, but Proton believes in a policy of continuous improvement and therefore reserves the right to change specification without prior notice. Please consult your nearest Proton dealer who will be happy to confirm model availability, prices and colour choices. E&OE. Specifications, dimensions and weights correct at time of going to print. Whilst every effort is made to ensure its accuracy, the information is not binding and is subject to alteration by Proton. Models shown may differ from UK specification vehicles.

© Copyright 2008. All rights reserved. Proton Cars (UK) Ltd. Edition ECO081

Proton Cars (UK) Ltd

1-3 Crowley Way, Avonmouth, Bristol, BS11 9YR

Customer Information 0800 0 521 521

www.proton.co.uk

GEN-2 ecoLogic